



Need help with Tax Configuration?

Got a question? No problem. Open a support case by clicking the button below. **We're here to help!**

[Seller Help](#)

Setting up your Tax Information

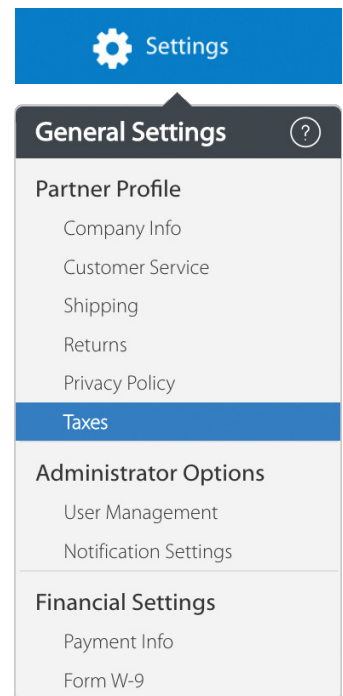
It's tax time! This guide helps you set up your tax collection information including:

- Tax Nexus
- Shipping Sales Tax Codes
- Sales Tax Policy

Be sure to keep this info updated, so your account stays compliant with our Seller Agreement.



Heads up! Your Sales Tax configuration may vary by state, so keep a close eye when editing this information.



Step-by-Step Instructions

1

Accessing your Tax Information

From Seller Center, click "Settings" and then click "Taxes."

Let's do this!
Instructions start on the next page.



Step-by-Step Instructions

2 Tax Nexus

First up is setting your Tax Nexus. This page shows a list of states where you may have nexus (aka the sales tax requirements for each state).

- To set or update sales tax nexus for a particular state, click the state name.** There will be a green dot next to the states where you have previously set up tax nexus. If this is your first time visiting the page, you will not see any green dots. You can always return to this page to update your tax nexus in the future.
- After you click a state, a page will appear that lists all of the sub-states.** Sub-states are the counties, districts, and cities within a state that have their own sales tax laws and rates. Some have no sub-states, while others have thousands. Certain states (e.g., WA, MN, CT, IA, OK, PA, SD, NJ, AL, DC, NE, SC, NY, ID, AR, IN, KY, NM, ND, RI, VA, VT, WV, WY, OH, AZ, CA, CO, ME, MD, MA, NV, TX, & UT) are selected by default because their sales tax are collected and remitted directly by Walmart.



- There are three flows for configuring sub-states (see next pages for instructions):**
 - Flow 1:** State has no sub-states
 - Flow 2:** State has sub-states
 - Flow 3:** State has only inherited sub-states



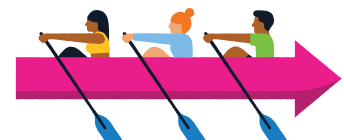
Here's an example of tax nexus set for the 50 U.S. states and Puerto Rico.

Nexus

Click the name of the state(s) where you collect sales tax. Some states may have subjurisdiction-level nexus for you to select. For more information, read [Configuring Sales Tax Collection](#).

<input type="checkbox"/> Alabama	<input type="checkbox"/> Illinois	<input type="checkbox"/> Montana	<input type="checkbox"/> Puerto Rico
<input type="checkbox"/> Alaska	<input type="checkbox"/> Indiana	<input type="checkbox"/> Nebraska	<input type="checkbox"/> Rhode Island
<input type="checkbox"/> American Samoa	<input type="checkbox"/> Iowa	<input type="checkbox"/> Nevada	<input type="checkbox"/> South Carolina
<input type="checkbox"/> Arizona	<input type="checkbox"/> Kansas	<input type="checkbox"/> New Hampshire	<input type="checkbox"/> South Dakota
<input type="checkbox"/> Arkansas	<input type="checkbox"/> Kentucky	<input type="checkbox"/> New Jersey	<input type="checkbox"/> Tennessee
<input type="checkbox"/> California	<input type="checkbox"/> Louisiana	<input type="checkbox"/> New Mexico	<input type="checkbox"/> Texas
<input type="checkbox"/> Colorado	<input type="checkbox"/> Maine	<input type="checkbox"/> New York	<input type="checkbox"/> United States Minor Outlying Islands
<input type="checkbox"/> Connecticut	<input type="checkbox"/> Marshall Islands	<input type="checkbox"/> North Carolina	<input type="checkbox"/> Utah
<input type="checkbox"/> Delaware	<input type="checkbox"/> Maryland	<input type="checkbox"/> North Dakota	<input type="checkbox"/> Vermont

Keep going!
Instructions continue on the next page.



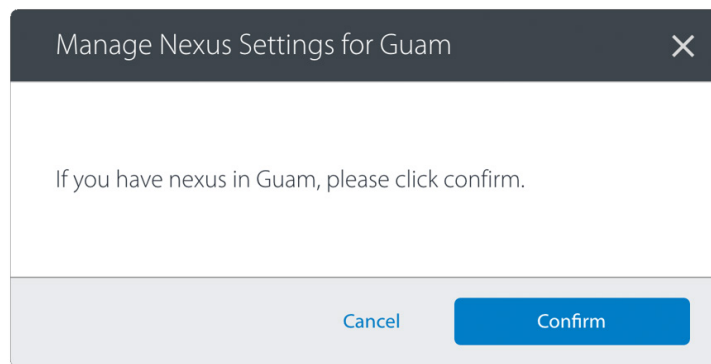
Step-by-Step Instructions

2 Tax Nexus (Continued)

Flow 1: State has NO sub-states

Some states, like Connecticut, do not have sub-states because they charge sales taxes evenly throughout the state.

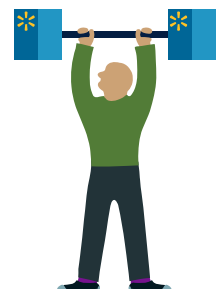
1. For states with no sub-states, you'll only set nexus at only at the state level.
2. After clicking into the state, a window will open to confirm your nexus selection.
3. Click "Confirm" to recognize your nexus in that state.
4. To undo, click the state again and confirm you no longer have nexus in that state.



Double check!

We trust you to configure your sales tax nexus correctly. But as a friendly reminder, always review your selections before confirming.

Don't stop now!
Instructions continue on the next page.



Step-by-Step Instructions

2 Tax Nexus (Continued)

Flow 2: State has sub-states

In some states, like Wisconsin, you may have nexus at the state-level and/or in sub-states.

1. Click the state name, check the state as a whole (if applicable) and/or all of the sub-states where you have nexus.
2. For some scenarios, you may want to confirm nexus ONLY at the sub-state level and NOT at the state level. To do this, DON'T check the state.
3. Click "Confirm" to recognize your nexus in that state and sub-states.
4. To undo or update, click the state name again, make and re-confirm your selections.



Some sub-states are locked because they inherit their nexus from the state level. For example, if you select "Wisconsin", all locked sub-states will automatically have nexus too.

Manage Nexus Settings for Wisconsin ✕

* By indicating that you have nexus in this state, all inherited (locked) sub-jurisdictions will also have nexus. Learn more about [inherited tax regions and nexus requirements](#).

State

Wisconsin

Viewing:

Districts

Cities

Counties

Districts [Unselect all](#)

<input checked="" type="checkbox"/> Baseball Stadium District	<input checked="" type="checkbox"/> Football Stadium District	<input checked="" type="checkbox"/> Ozaukee Baseball Stadium District	<input checked="" type="checkbox"/> Washington Baseball Stadium District
<input checked="" type="checkbox"/> Brown Football Stadium District	<input checked="" type="checkbox"/> Milwaukee Baseball Stadium District	<input checked="" type="checkbox"/> Racine Baseball Stadium District	<input checked="" type="checkbox"/> Waukesha Baseball Stadium District

Cities [Select all](#)

<input type="checkbox"/> Bayfield	<input type="checkbox"/> Eagle River	<input type="checkbox"/> Milwaukee	<input type="checkbox"/> Stockholm
<input type="checkbox"/> Bayside	<input type="checkbox"/> Lake Delton	<input type="checkbox"/> Rhinelander	<input type="checkbox"/> Wisconsin Dells



Double check!

We trust you to configure your sales tax nexus correctly. But as a friendly reminder, always review your selections before confirming.

Step-by-Step Instructions

2 Tax Nexus (Continued)

Flow 3: State has ONLY inherited sub-states

Some states, like Ohio, have many sub-states within it, but all of the sub-states inherit that state's nexus setting.

1. **Once you click “Confirm Nexus Settings”, all of the sub-states will inherit their nexus from the state itself.** For example, if you check off Ohio, every sub-state within Ohio will have nexus as well. You can still search or filter for specific sub-states, but you can't modify their nexus individually.



Double check!

We trust you to configure your sales tax nexus correctly. But as a friendly reminder, always review your selections before confirming.

You completed Tax Nexus!
Instructions continue on the next page.



Step-by-Step Instructions

3 Shipping Sales Tax Codes

For each shipping method you support (value, expedited, etc.), you must provide a sales tax code. This helps us know what to charge Walmart customers for shipping. Click below to learn more about shipping sales tax codes.

Shipping Sales Tax Codes

Download the current Sales Tax Codes for Walmart Marketplace by clicking below. You'll use this list to complete Item Setup, BUT do not need it to finish your tax settings.

Download Sales Tax Codes

4 Sales Tax Policy

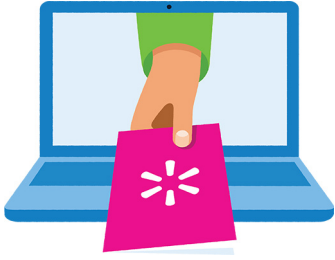
Place details about your sales tax policies and rules in the box provided (max 4,000 characters). This information keeps Walmart.com customers informed about how your company's tax policies. Please do not include any URLs or links to other websites.

5 Final Step!

After you've finished setting up nexus, shipping sales tax codes and your sales tax policy, click the "Mark Nexus Setup as done" button.

Woohoo - you did it!
Thanks for hanging in there.





Keep on learning, and let's grow your business!

We're here to help you learn more, faster. Click below to find other QuickStart guides, help articles, and contact Partner Support!

[Seller Help](#)



Links from this QuickStart Guide

Seller Help

sellerhelp.walmart.com/seller/s/

Shipping Sales Tax Codes

sellerhelp.walmart.com/seller/s/guide?article=000007437

Download Sales Tax Codes for Walmart Marketplace

sellerhelp.walmart.com/seller/s/guide?article=000005968

